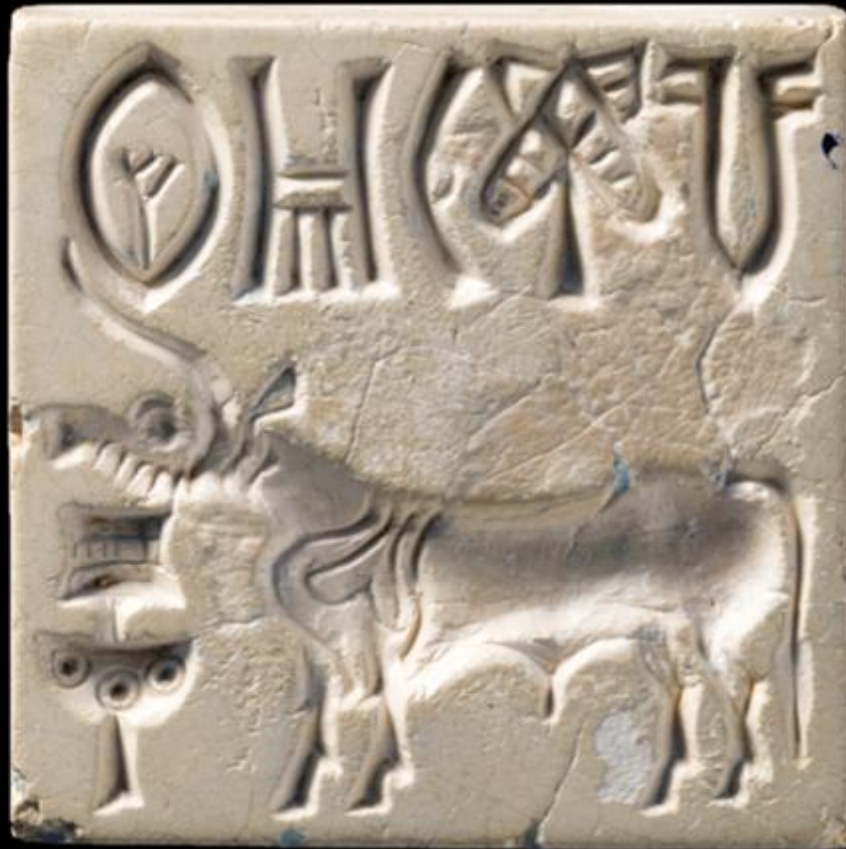
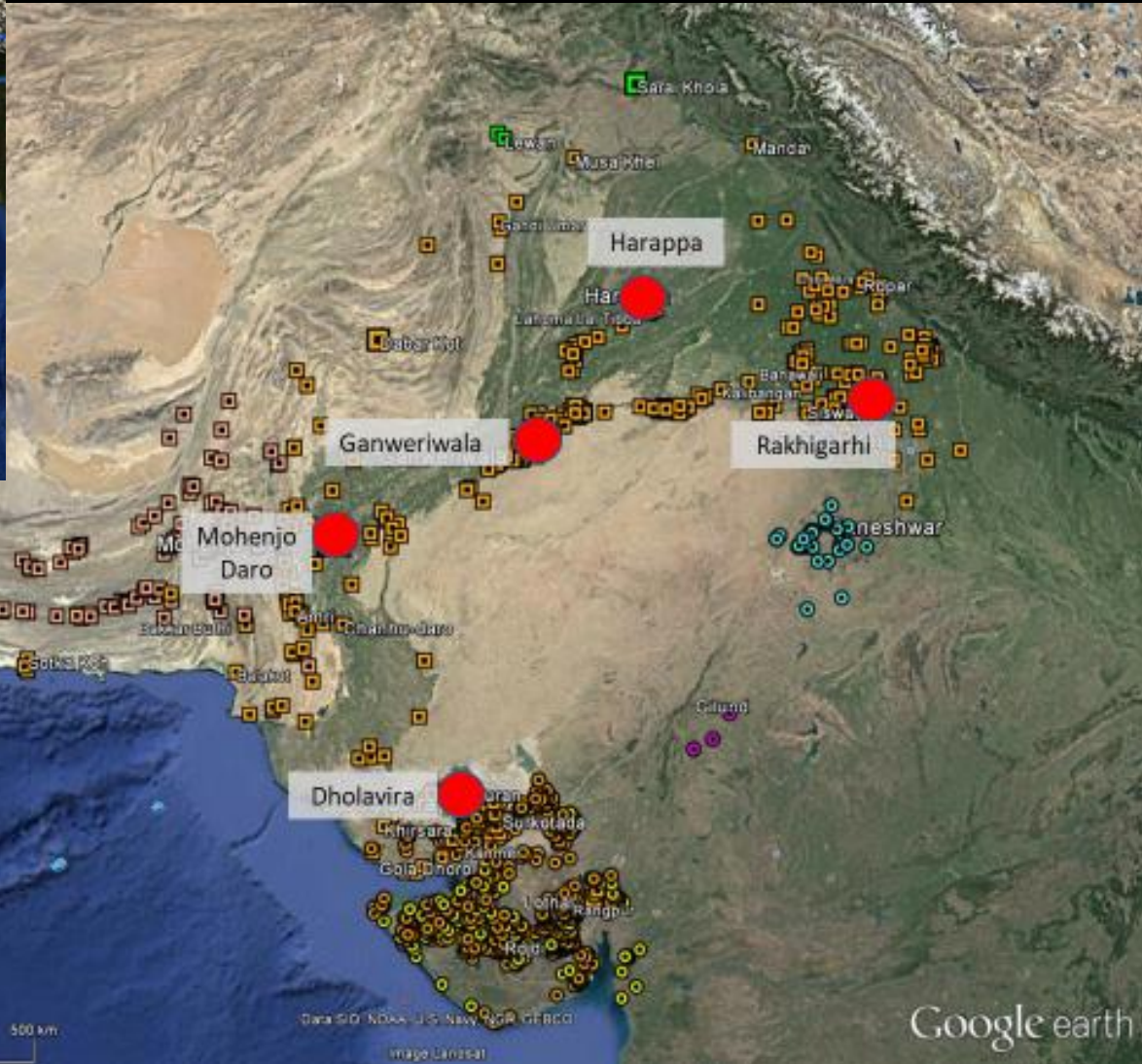


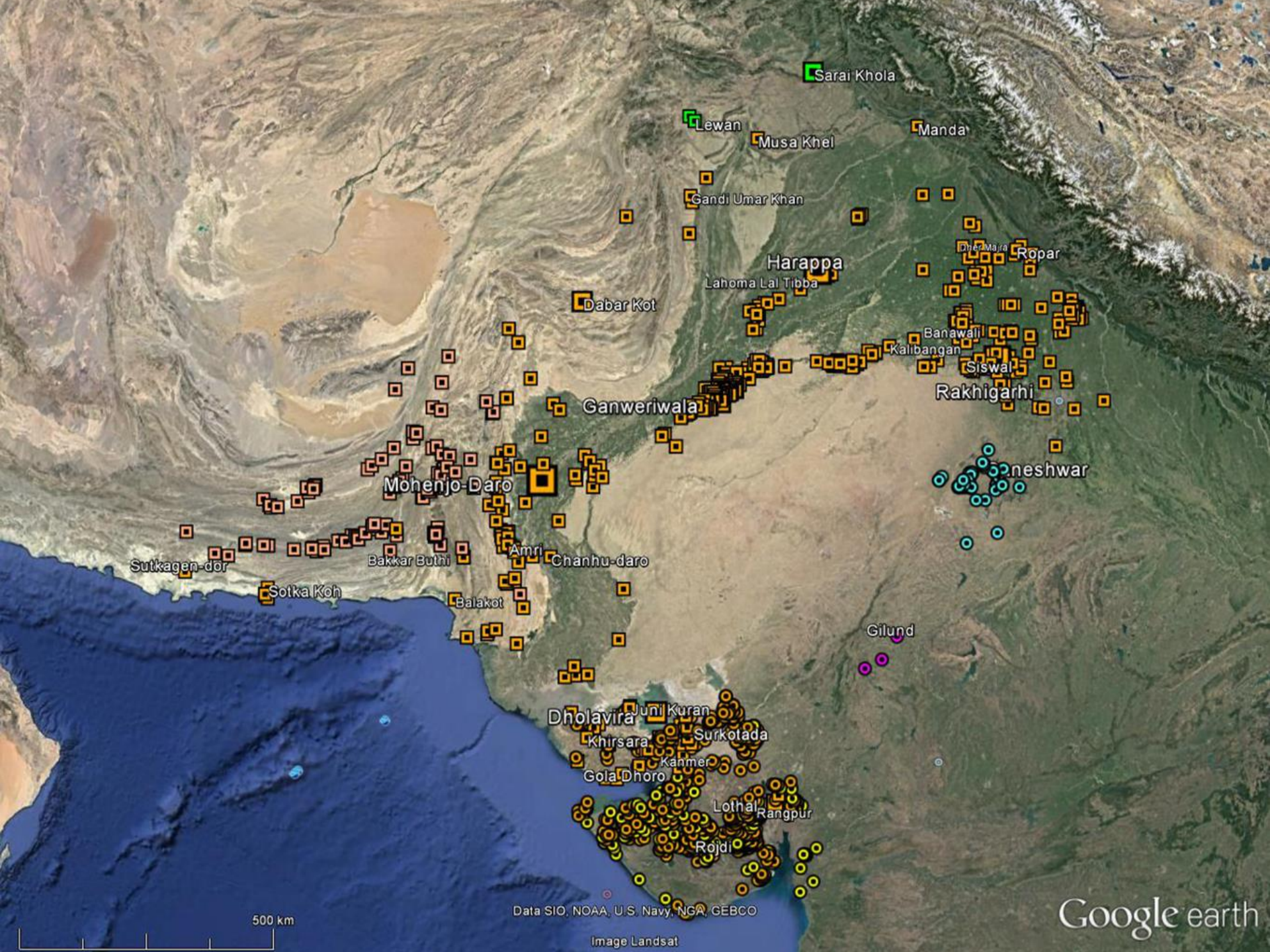
# PRIEST-KINGS AND VILLAGE LIFE: AN INTRODUCTION TO THE INDUS CIVILIZATION



1 cm







Sarai Khola

Lewan

Musa Khel

Manda

Gandi Umar Khan

Harappa

Lahoma Lal Tibba

Dabar Kot

Dhera Maje

Ropar

Banawali

Kalibangan

Siswal

Rakhigarhi

Ganweriwala

Mohenjo-Daro

Chanhudaro

Sutkagen-dor

Bakkar Bulhi

Amri

Chanhu-daro

Sotka Koh

Balakot

Gilund

Dholavira

Jun Kuran

Surkotada

Khirsara

Gola Dhoro

Kanmer

Lothal

Rajdi

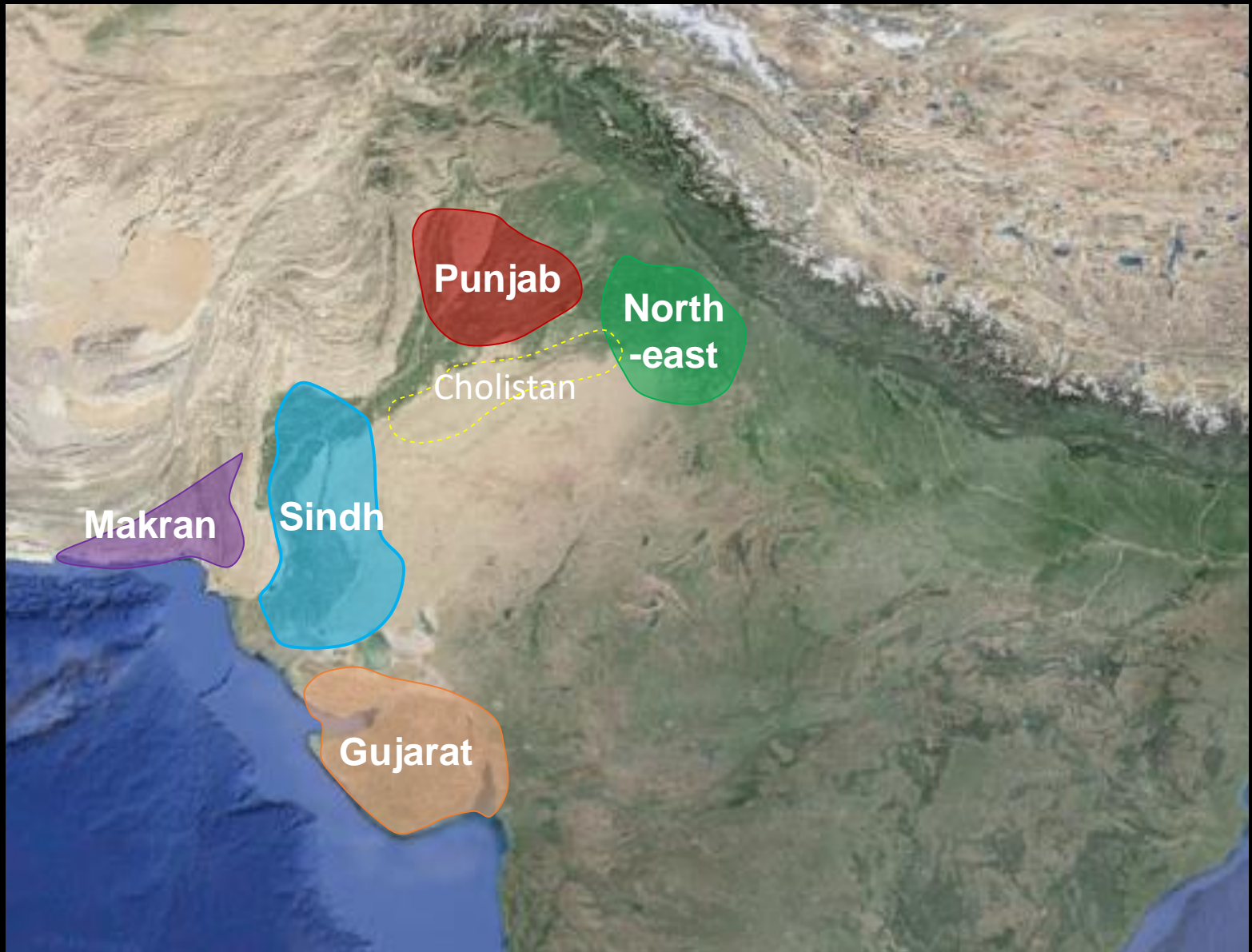
500 km

Data SIO, NOAA, U.S. Navy, NGA, GEBCO

Image Landsat

Google earth





Punjab

North  
-east

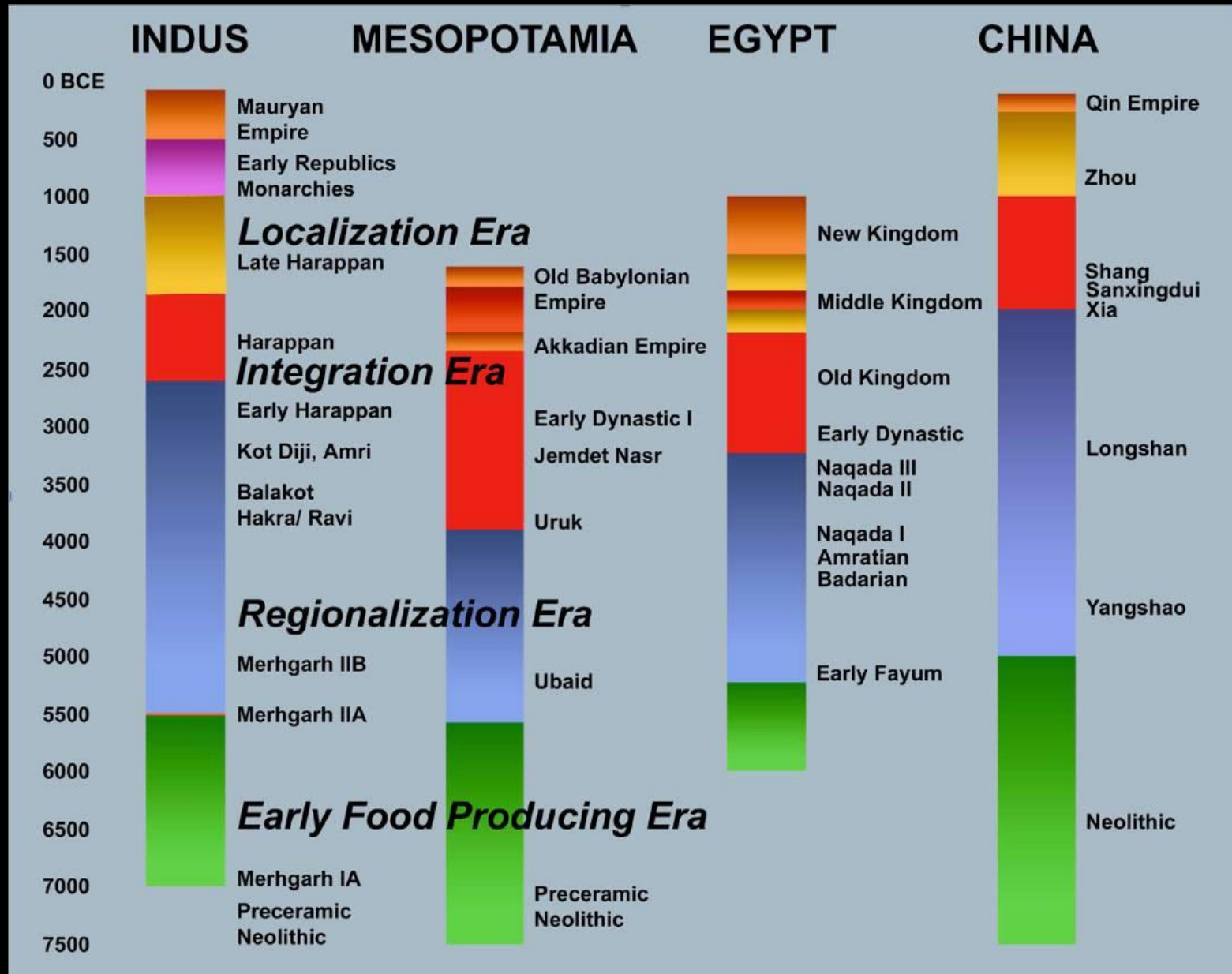
Cholistan

Makran

Sindh

Gujarat

# When?



## Option 1: The “Traditions”

Based on the site of Harappa, the so called ‘type’ site of the Indus (or Harappan) Civilization.

<b>Early Food Producing Era</b>	<b>+7000-5000 BCE</b>
<b>Regionalization Era</b>	<b>5000-2600 BCE</b>
Harappa Period 1A/B (Hakra/Ravi)	>3700-2800 BCE
Harappa Period 2 (Kot Diji)	2800-2600 BCE
<b>Integration Era</b>	<b>2600-1900 BCE</b>
Harappa Period 3A	
Harappa Period 3B	
Harappa Period 3C	
<b>Localization Era</b>	<b>1900-1300 BCE</b>
Harappa Period 4 (Late Harappan)	1900-1800 BCE
Harappa Period 5 (Cemetery H)	1800-<1700 BCE

## Option 2: The “Stages”

Based on Possehl’s (2002) scheme of a more regionally varied model.

<b>Stage 1: Early farming communities and pastoral camps</b>	<b>7000-4300 BCE</b>
Kili Gul Mohammad Phase	7000-5000 BCE
Burj Basket-marked Phase	5000-4300 BCE
<b>Stage 2: Developed farming villages and pastoral societies</b>	<b>4300-3200 BCE</b>
Togau Phase	4300-3800 BCE
Kechi Beg/Hakra Wares Phase	3800-3200 BCE
<b>Stage 3: Early Harappan (contemporaneous)</b>	<b>3200-2600 BCE</b>
Amri-Nal Phase (Sindh, Baluchistan, north Gujarat)	
Kot Diji Phase (Sindh, Punjab)	
Sothi-Siswal Phase (northwest India)	
Damb Sadaat Phase (central Baluchistan)	
<b>Stage 4: Early-Mature Harappan Transition</b>	<b>2600-2500 BCE</b>
<b>Stage 5: Mature Harappan (contemporaneous)</b>	<b>2500-1900 BCE</b>
Sindhi Harappan (Sindh)	
Kulli Harappan (Baluchistan, Makran coast)	
Sorath Harappan (Saurashtra, Gujarat)	
Punjabi Harappan (Punjab)	
Eastern Harappan (northwest India)	
Quetta Phase (central Baluchistan)	
Late Kot Diji Phase (northern plains)	
<b>Stage 6: Posturban Harappan/Late Harappan</b>	<b>1900-1000 BCE</b>
Jhukar Phase	1900-1700 BCE
Early Pirak Phase	1800-1000 BCE
Late Sorath Harappan	1900-1600 BCE
Lustrous Red Ware Phase	1600-1300 BCE
Cemetery H Phase	1900-1500 BCE
Swat Valley Period IV	1650-1300 BCE
Late Harappan Phase (Haryana & Western Uttar Pradesh)	1900-1300 BCE
Late Harappan –PGW Overlap Phase	1300-1000 BCE

[https://www.facebook.com](https://www.facebook.com/Zoe203/videos/10156559668065775/?t=1)  
[/Zoe203/videos/10156559](https://www.facebook.com/Zoe203/videos/10156559668065775/?t=1)  
[668065775/?t=1](https://www.facebook.com/Zoe203/videos/10156559668065775/?t=1)



# Assessed work

**(Attendance and participation – 25%)**

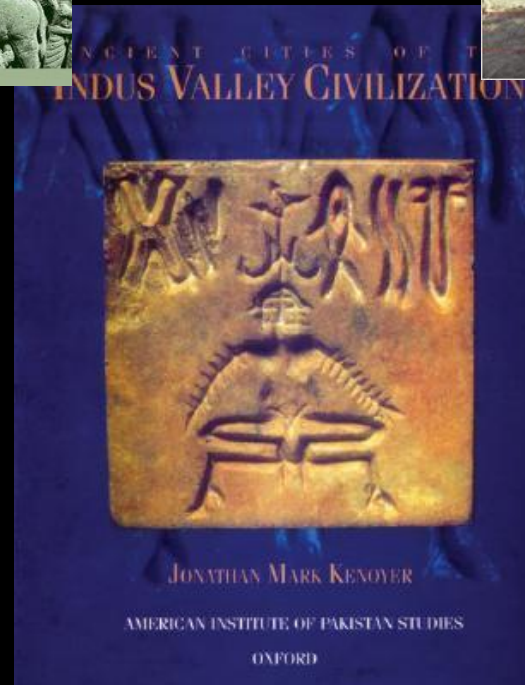
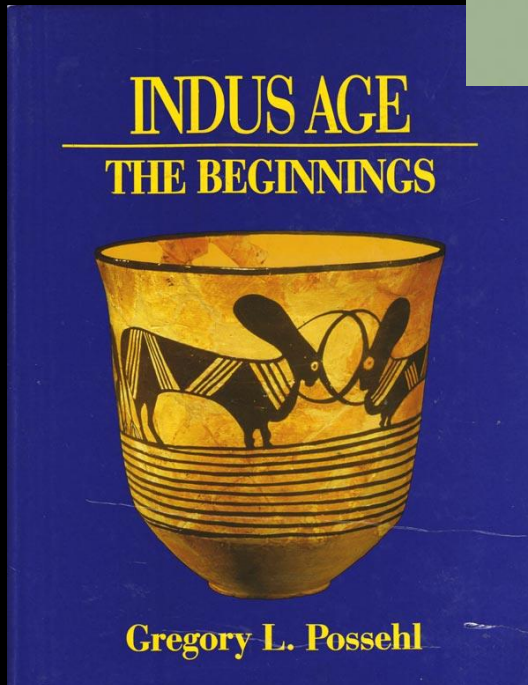
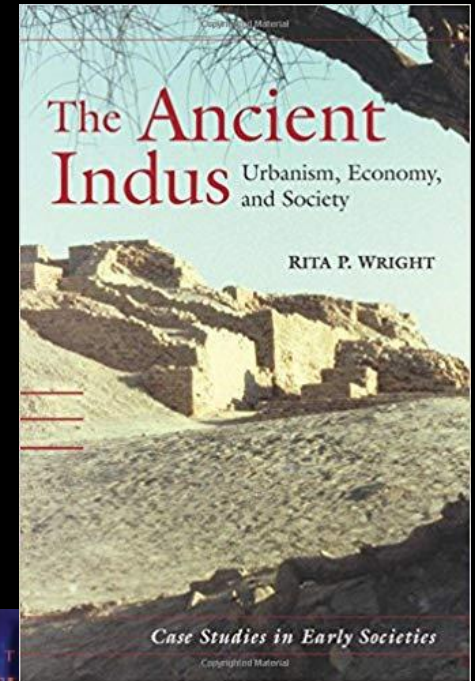
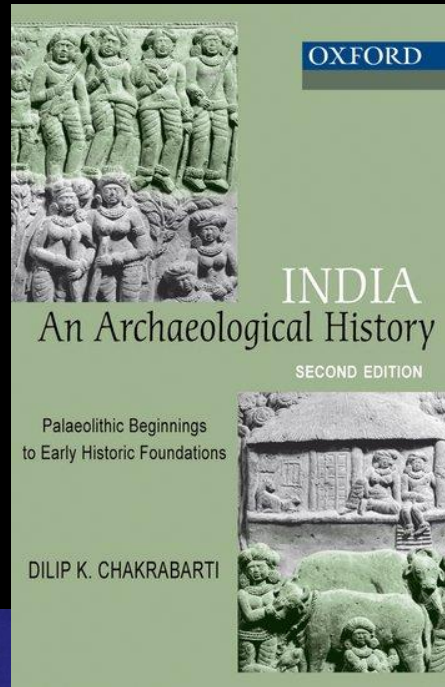
**Midterm quiz (25%)** – During lecture 14.

**Research Project and Presentation (40% + 10% = 50%)** – Written work due end of semester. Max. 2500 words. TALK TO ME about your choice of topic before embarking on it! Do this by week 5 please!!!

Presentations will be in Lectures 26-27. They will be 10 minutes long. I will also give a 10 minute talk on a paper I am working on and you can question me on it.



# Resources





# Rockefeller Library

10 Prospect Street  
Built in 1964



BROWN

← ♿ Entrance





Academia.edu  
share research



HARAPPA.COM

ResearchGate



THOMSON REUTERS  
WEB OF KNOWLEDGE<sup>TM</sup>

ScienceDirect



ELSEVIER

Google  
Scholar



**JASPAR**

